



**Oxford AHSN
Partnership Council
Wednesday 18 June 2014**



Welcome



Agenda

Welcome

Nigel Keen, Chairman, Oxford AHSN

Oxford AHSN – our first year ¹

Professor Gary A Ford, Chief Executive Officer, Oxford AHSN

Co-morbidity clinical network - Why mental and physical co-morbidities need to be treated together

Dr Michael Yousif, Psychological Medicine Service, and co-morbidity network clinical lead

Out of Hospital care clinical network – a critical area for success

Dr Dan Lasserson, Out of hospital care clinical network lead

Discussion

Nigel Keen, Chairman, Oxford AHSN

AHSN Panel

¹ http://www.oxfordahsn.org/wp-content/uploads/2014/06/OMI_10593_Oxford_AHSN_Annual_Report_Final.pdf

AHSN Partners

Universities in the Network



- 1 Buckingham University
- 2 Buckinghamshire New University
- 3 Cranfield University
- 4 Oxford Brookes University
- 5 The Open University
- 6 University of Bedfordshire
- 7 University of Oxford
- 8 University of Reading
- 9 University of West London (Reading Hub)

NHS in the Network



- 1 Berkshire Healthcare NHS Foundation Trust
 - 2 Buckinghamshire Healthcare NHS Trust
 - 3 Central and North West London NHS Foundation Trust (community and mental health services)
 - 4 Heatherwood and Wexham Park NHS Foundation Trust
 - 5 Milton Keynes NHS Foundation Trust
 - 6 Oxford Health NHS Foundation Trust
 - 7 Oxford University Hospitals NHS Trust
 - 8 Royal Berkshire NHS Foundation Trust
 - 9 South Central Ambulance Service NHS Foundation Trust
 - 10 Southern Health NHS Foundation Trust (Learning Disabilities)
- | |
|---------------------|
| Aylesbury Vale CCG |
| Bedfordshire CCGs |
| East Berkshire CCGs |
| West Berkshire CCGs |
| Chiltern CCG |
| Milton Keynes CCG |
| Oxfordshire CCG |

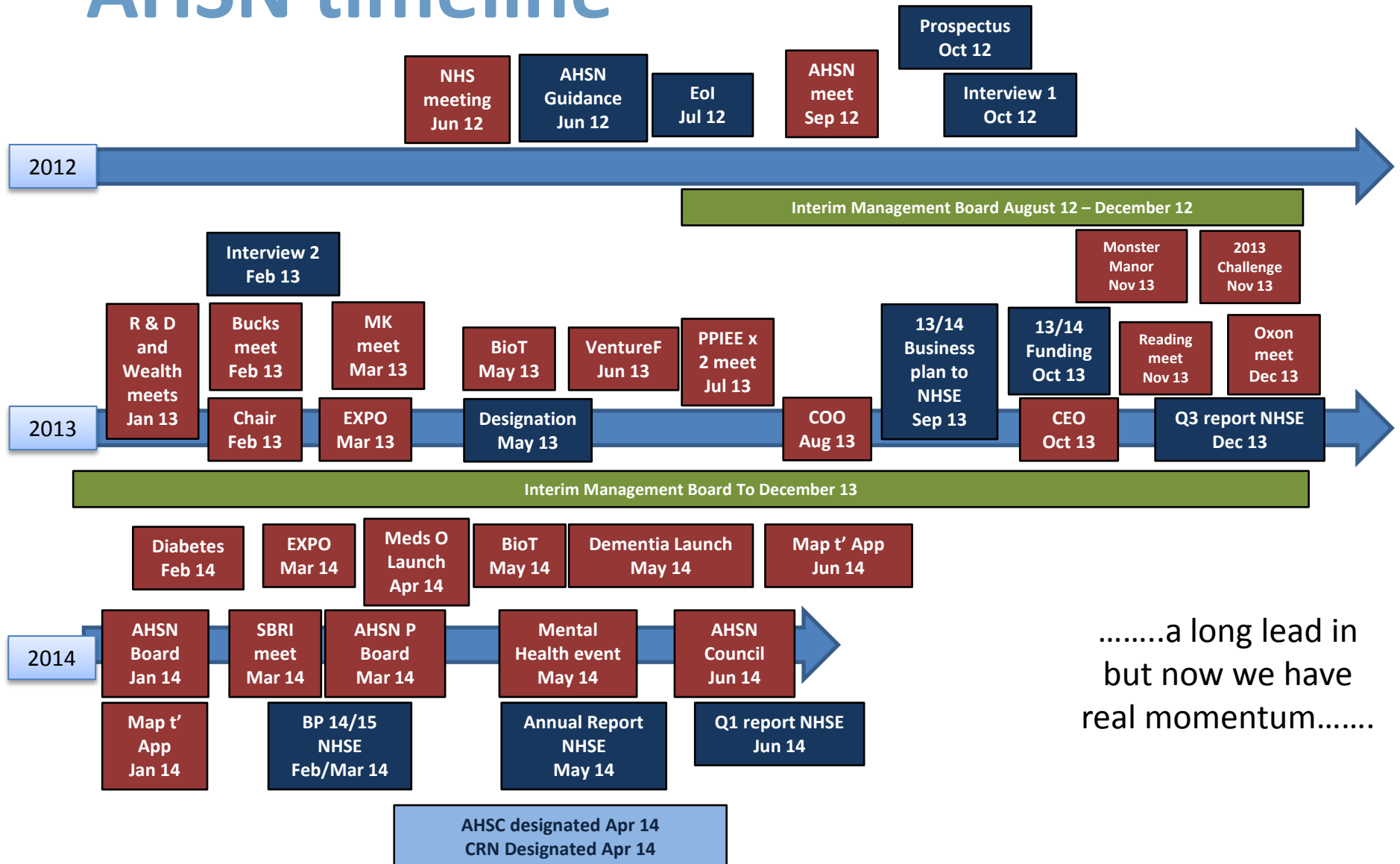
(Locations of HCs except for 3 and 10)

Local Enterprise Partnerships



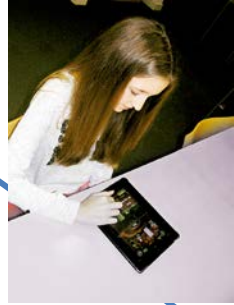
- | |
|-----------------------------|
| Buckinghamshire LEP |
| Oxfordshire LEP |
| South East Midlands LEP |
| Thames Valley Berkshire LEP |

AHSN timeline



.....a long lead in but now we have real momentum.....

Focus on the needs of patients

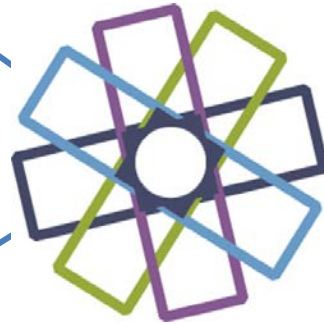


Every patient monitored: scalable, low-cost multiple vital sign patient-data acquisition and analysis platform, for rapid early detection of deterioration - An SBRI Healthcare NHS Development Contract to increase Patient Safety - *Isansys Lifecare Ltd*
www.isansys.com

Speed up adoption of innovation



Clinically supported social network for service users with eating disorders



Novel service model to increase uptake and retention in cardiac rehabilitation in Bucks Healthcare NHS Trust: interim analysis
Buckinghamshire Healthcare NHS Trust & Janssen Healthcare Innovation

New Blood Test to reduce unnecessary invasive procedures for bowel cancer suspects – SBRI funded
Oncascan Limited

Partnership and collaboration

Fast and Sensitive Multiplex Immunoassays Using Affordable Microfluidics for Point of Care Diagnostics - *School of Pharmacy, University of Reading, Capillary Film Technology Ltd, Chemical Engineering Department, University of Loughborough*

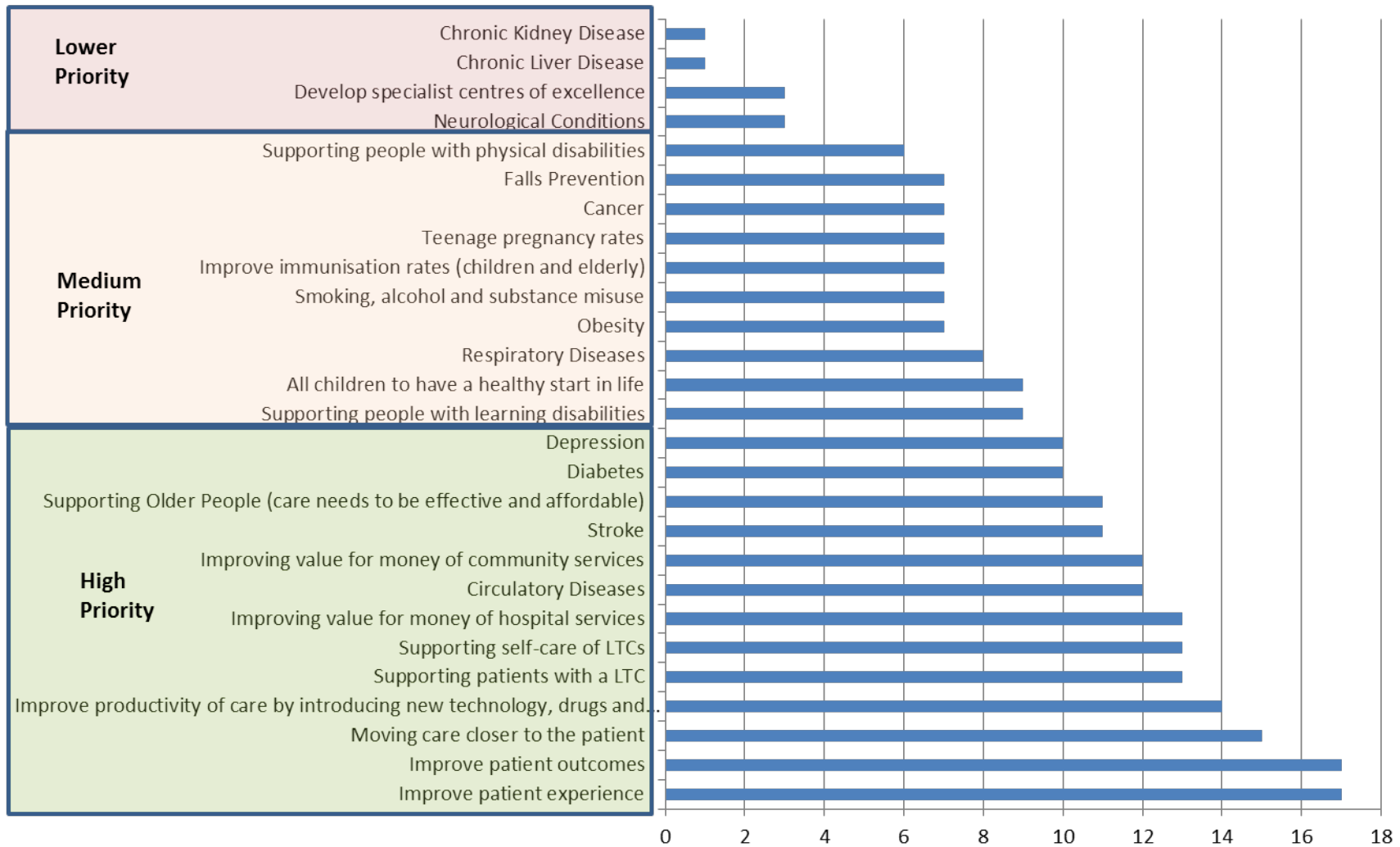
Create wealth



Oxford AHSN – Best Care Programme

- **Ten clinical networks**
 - Anxiety & Depression – Prof David Clark
 - Children – Prof Andrew Pollard
 - Dementia – Dr Rupert McShane
 - Diabetes – Prof Stephen Gough
 - Early intervention in mental health – Dr Belinda Lennox
 - Imaging - Prof Fergus Gleeson
 - Maternity –Mr Lawrence Impey
 - Medicines optimisation – Boo Vadher
 - Mental and physical co-morbidity – Prof Mike Sharpe
 - Out of Hospital care – Dr Daniel Lasserson
- **Continuous learning** in collaboration with Health Education Thames Valley
 - 7 Fellowships (MScs) in Evidence Based Healthcare (Prof Carl Heneghan)
 - Patient Safety Academy (Prof Peter McCulloch)

Oxford AHSN Strategic Priorities of Providers and Commissioners



Source: NHS Providers Strategic Plans, NHS CCGs Strategic Plans, Joint Strategic Needs Assessments for Oxfordshire, Buckinghamshire, Berkshire and Bedfordshire

Clinical Innovations 2014/2015

	Health Need	Innovation	Source	Care Setting				Partnership Working for Delivery		
				Primary	Community	Acute	Mental Health	AHSN Clinical Network	Strategic Clinical Network	Other - National Orgs/Charities/ Industry
1	UTI	Bladder Scan(CAUTI)	National innovation			✓		✓		
2	Atrial Fibrillation	Ambulatory ECG Monitor	National Prize Winner	✓	✓			✓	✓	✓
3	Eating Disorders	SHaRON	Local Innovation				✓	✓✓		
4	Wastage/Pt Safety	Electronic Blood Tranfusion	Local Innovation			✓		✓		✓
5	Stroke	Intermittent Pneumatic Compression	NHSE IQ		✓	✓		✓	✓	
6	Recovery	Intra Operative Fluid Management	High Impact Innovation			✓		✓✓		✓
7	Atrial Fibrillation	Warfarin & Anticoagulants TAs	NICE	✓		✓		✓	✓	✓
8	Cancer	Renal Cancer TAs	NICE			✓		✓	✓	✓
9	Arthritis	Monoclonal Antibodies for Rheumatoid Arthritis TAs	NICE	✓		✓		✓		✓
10	Dementia	Drugs for Alzheimer's Disease TA	NICE	✓	✓	✓	✓	✓✓	✓	✓

RIF funding for Intra Operative Fluid Management

Based on priorities from across the NHS and rigorous process



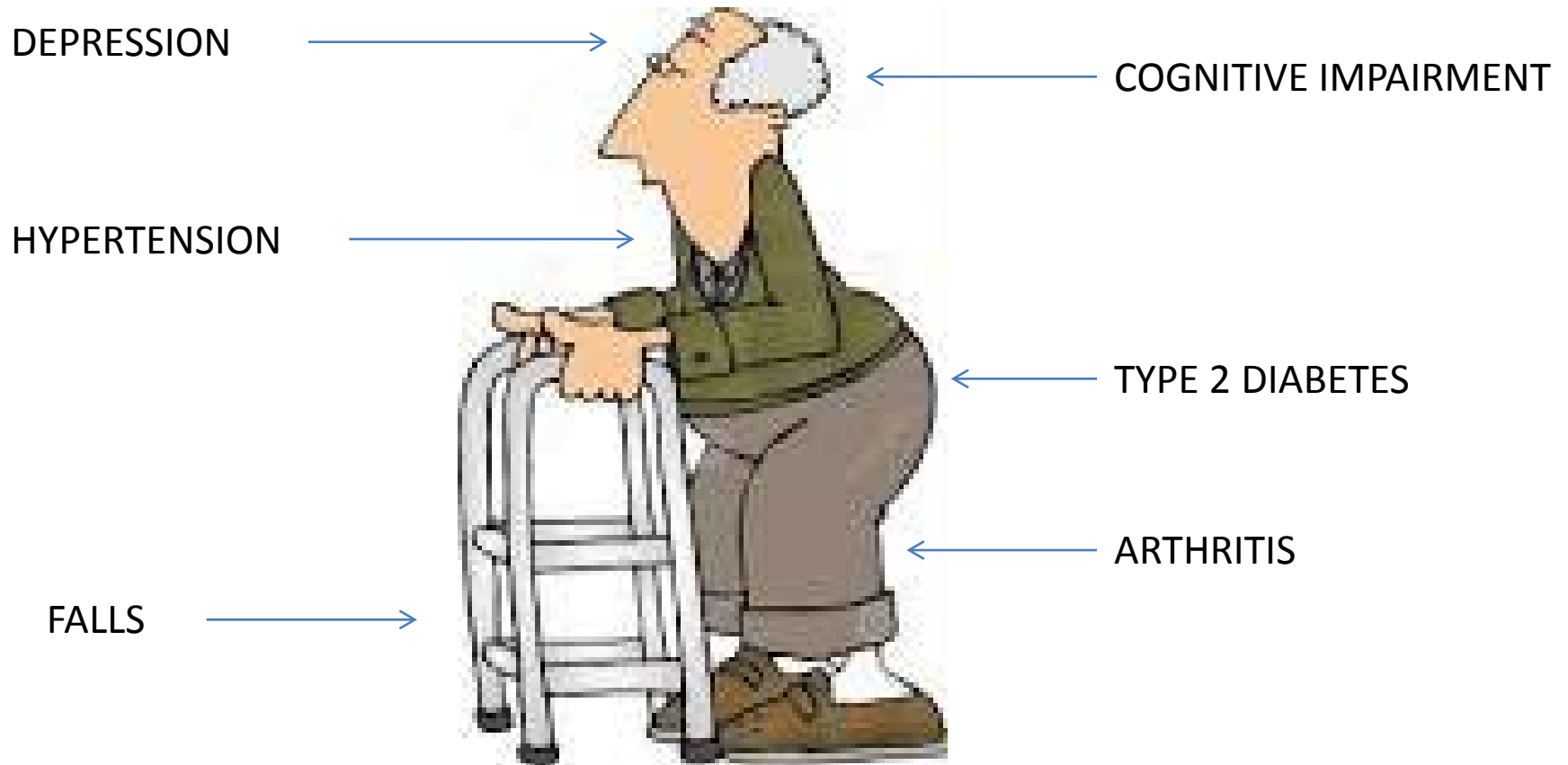
Why mental and physical co-morbidities need to be treated together

Dr Michael Yousif

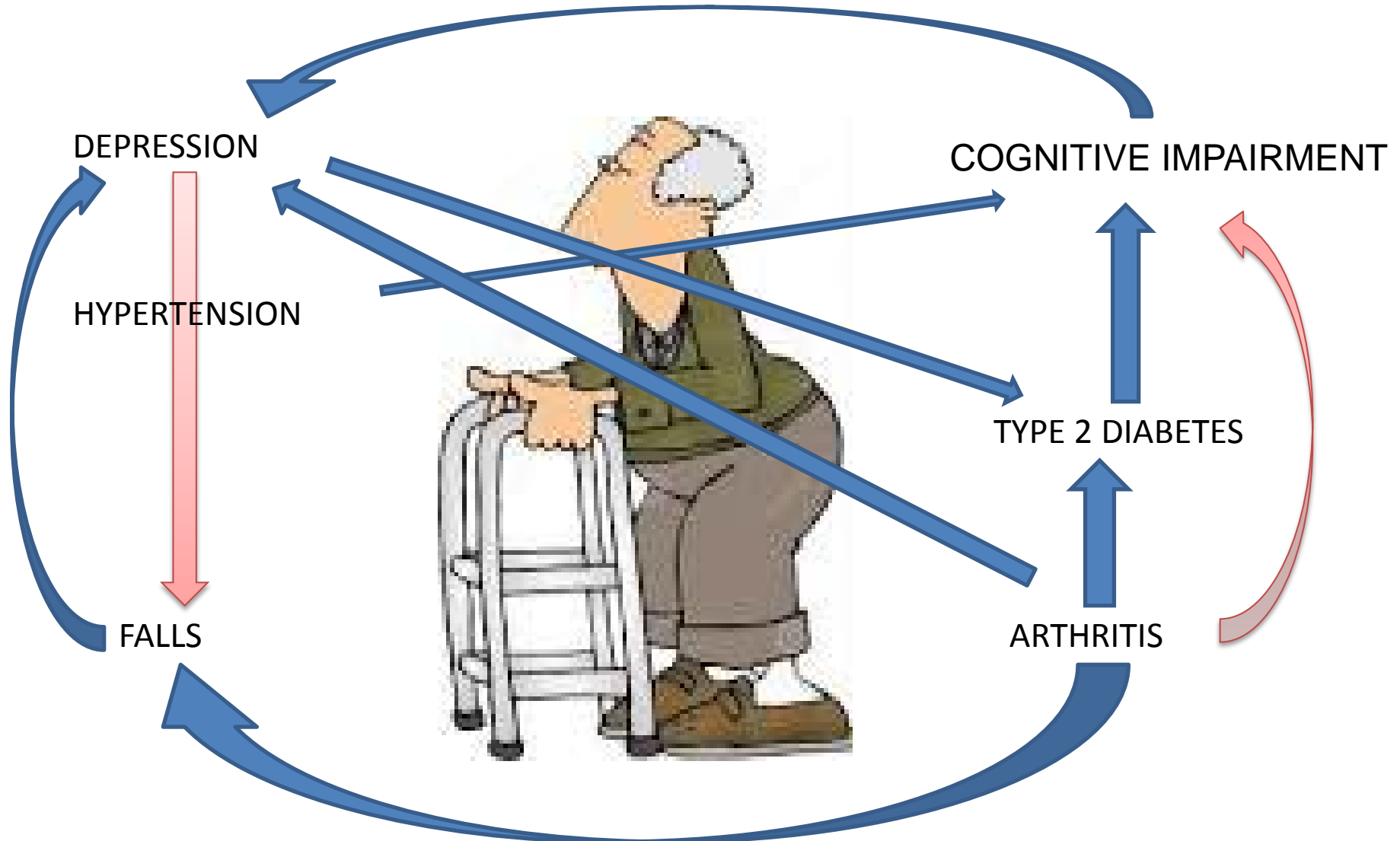
Clinical Lead, Oxford AHSN Co-morbidity Network

Consultant in Psychological Medicine, OUH NHS Trust

What is co-morbidity?



What is co-morbidity?



Why does co-morbidity matter?

Patient

Poorer outcomes

Poorer quality of life

More time in hospital

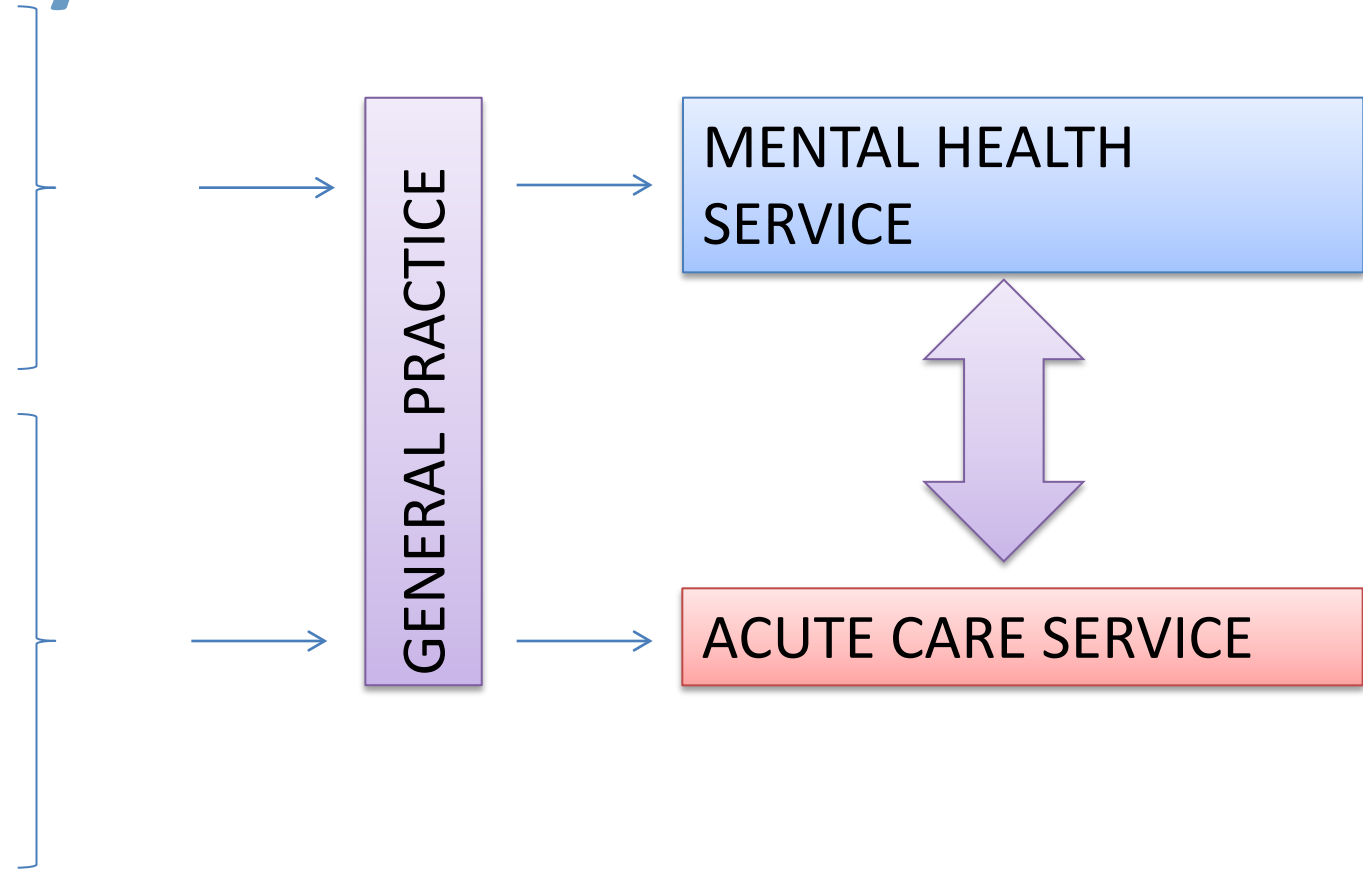


- W.Berks >65s population increased by 23% since 2001 (13% increase regionally).
- 12% of Oxon population has a limiting long-term illness
- 18 Oxfordshire neighbourhoods among 20% most deprived in England
- Oxfordshire has highest DToC numbers

Current system



Current system



How to integrate

Psychological medicine services

- How do they do achieve integration?
- How do we know which way is best?
- What does best even mean?
- What's the most cost-effective way?

Oxford AHSN Co-morbidity Network

- Collaboration between services
- Establish network of stakeholders
- Service mapping
- Review the evidence
- Cross regional pilot
- *Guidance for service development and evaluation*

Oxford AHSN Co-morbidity Network

Dr Michael Yousif

Clinical Lead

Dr Jane Walker

Operations Lead

Prof Michael Sharpe

Strategic Lead

psychologicalmedicine@ouh.nhs.uk



Out of Hospital Care Network – a critical area for success

Dr Dan Lasserson

Senior Clinical Researcher, Nuffield Department of Primary
Care Health Sciences

Senior Trust GP, OUH NHS Trust

Focus of the network

- Acute illness in patients who live with frailty
- Challenge of recognition and response
 - Timely
 - Assessment
 - Intervention
 - Monitoring
- Patients at the centre of design of care

Initial projects – variation and innovation

- What is the variation in time to assessment for care out of hospital?
 - Provider
 - Geography
 - Calendar day
- What is the ‘innovation map’ for new care models in the AHSN region?

Innovation in technology and care delivery

- Point of care diagnostics



- Acute ambulatory care



- Emergency Multidisciplinary Unit (EMU)



Network partners

- Care providers and commissioners
- Academic partners – Institute of Integrated Care, Bucks New University
- Patients and the public
- Third sector organisations

A network of innovators

- Supporting development of future healthcare
- Rapid learning and dissemination
- Understanding how harnessing innovation creates healthcare that people want to receive

Discussion