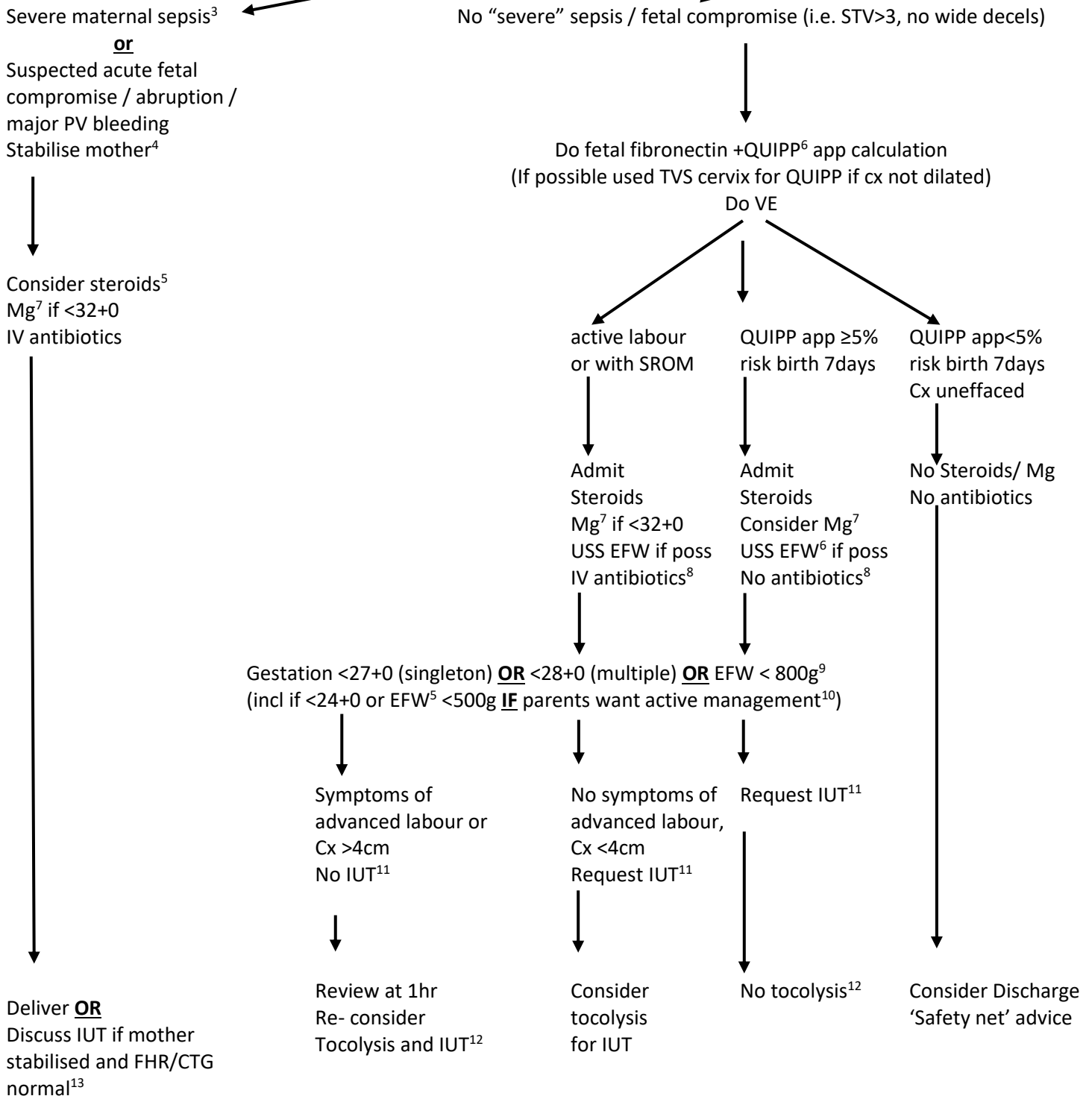


Threatened PTL at $\geq 22+3^{1,2}$, $<34+6$

Maternal assessment, with CTG if $\geq 26+0w$



Footnotes:

1. Dates according to CRL excl in IVF pregnancies. Note this gestation has been modified following new BAPM Guidelines. Active resuscitation for neonates <23+0 will be offered if there are good prognostic (eg >/+22+3, had steroids, delivery in Level 3). If there is uncertainty about the circumstances or the dates, call obstetric consultant at OUH.
2. Women potentially suitable for emergency cerclage (i.e. >14 weeks, no sepsis and with painless cervical opening) should be discussed with Level 3 FMU consultant.
3. Sepsis meeting criteria for local severe sepsis bundle
4. Stabilisation of acutely unwell mother beyond scope of this document
5. Steroids with caution in severe sepsis. Ensure antibiotics first
6. Using Point of care test (fibronectin) +/- TVS cervix to improve accuracy. Available as app on mobile device.
7. Mg: Magnesium bolus 4g (16mmol) Magnesium Sulphate as 20mls of 20% magnesium sulphate IV over 5 – 10 minutes if <32+0 weeks. Note PReCePT suggests 30 but clinical benefit up to 32 weeks
8. IV antibiotics indicated, but not if QUIPP app high risk but cervix not dilated. Follow unit antibiotic guideline; avoid co-amoxiclav.
9. Criteria for birth in a Level 3 unit and NICU. If criteria not met, manage as per local preterm labour guideline
10. If time, offer discussion with paediatrician. Document any discussion regarding IUT with parents. Consider providing Thames Valley neonatal network patient information leaflets if available [Patient Information leaflets Extreme Prematurity](#)
11. For IUT: try OUH first. 08.00-21.30 call Delivery Suite (01865 221987/8), and specifically request to speak to the consultant obstetrician on Delivery Suite. DO NOT call NICU or Delivery Suite manager first. Between 21:30 – 08:00 call OUH switchboard (01865 741166) and request to speak to the obstetric consultant on call. If IUT is agreed between 21:30 – 08:00, then call delivery Suite to complete required handover forms. If no OUH availability, use PeriDASH [South East Perinatal Maternity Bed and Neonatal Cot Locator - Power Apps](#) and [SONeT \(Southampton Oxford Neonatal Transport\)](#)
12. Tocolysis. Follow unit tocolysis guideline. Do not use nifedipine if magnesium has been given or is to be given
13. Consider discussion with Level 3 obstetrician on call